

# How to Boost Resilience Against Ransomware Attacks

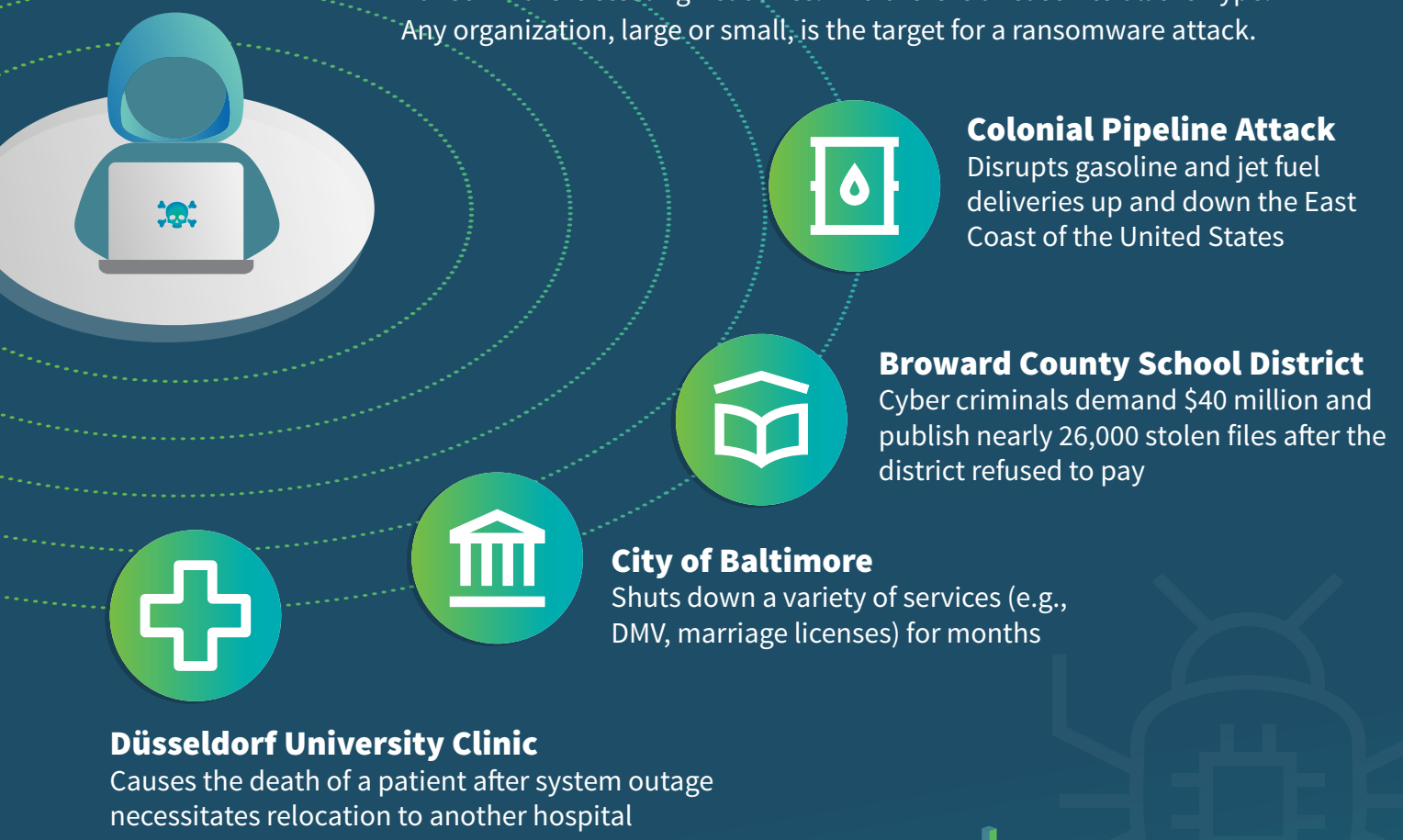
## Ransomware: A Severe Threat

Threat actors are taking full advantage of today's uncertain times by launching a wave of new cyberattacks, leveraging tactics such as phishing, ransomware, and credential stuffing. Ransomware attacks alone — in which hackers take over an organization's computer systems and demand ransom payments to return them — have seen a dramatic uptick amid the COVID-19 pandemic.



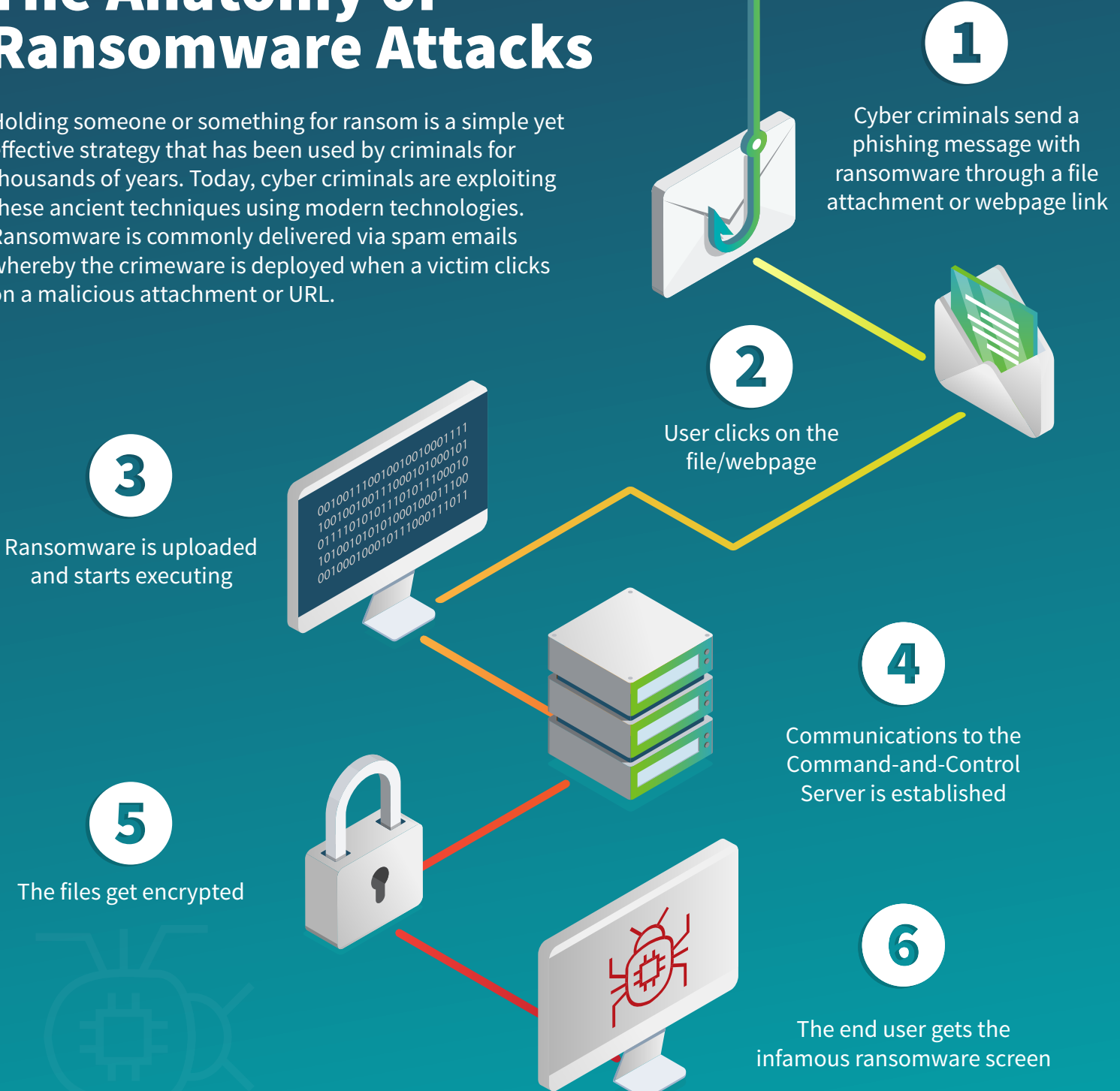
## The Ransomware Blast Radius

Ransomware is stealing headlines. And there is a reason to all the hype. Any organization, large or small, is the target for a ransomware attack.



## The Anatomy of Ransomware Attacks

Holding someone or something for ransom is a simple yet effective strategy that has been used by criminals for thousands of years. Today, cyber criminals are exploiting these ancient techniques using modern technologies. Ransomware is commonly delivered via spam emails whereby the crimeware is deployed when a victim clicks on a malicious attachment or URL.



## 3 Basic Steps to Increase your Cyber Resilience



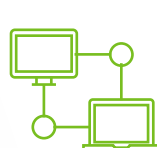
## Go Beyond with the Power of Absolute

Organizations must pay special attention to the state of their endpoints, as those devices are often the launchpad from which ransomware spreads across the network. Absolute helps organizations have the necessary visibility, defense, and response tools in place to protect against and respond to ransomware attacks.



### Monitor for Unusual Activity

Provides IT and security staff with granular insight into all the endpoints on their network.



### Control Endpoints from Anywhere

Empowers IT and security staff to lock devices and restrict device network access to halt the spread of malicious software.



### Harden Endpoint Security Controls

Makes endpoint security controls resilient against software decay or malicious actions by self-healing these critical applications whenever needed.



### Orchestrate Incident Response

Helps orchestrate remote device actions via its Absolute Reach scripting, which is resilient to ransomware attacks.

## Don't be Held Hostage by Ransomware

Ultimately, selecting an endpoint resilience solution like Absolute is one of the most critical technology investments an organization can make to minimize their cyber risk exposure.

Ready to protect your organization?

Setup a Demo



**ABSOLUTE**

absolute.com

Sources: Cybersecurity Ventures, November 2020, IBM's Cost of a Data Breach Report 2020

© 2021 Absolute. All rights reserved. Absolute and Persistence are registered trademarks of Absolute. Self-healing Endpoint Security is a trademark of Absolute. All other trademarks are property of their respective owners. ABT-Ransomware-infographic\_062921